

A Complete Business Solution

For Pharmaceutical Manufacturing Sector



Enterprise Software Solutions

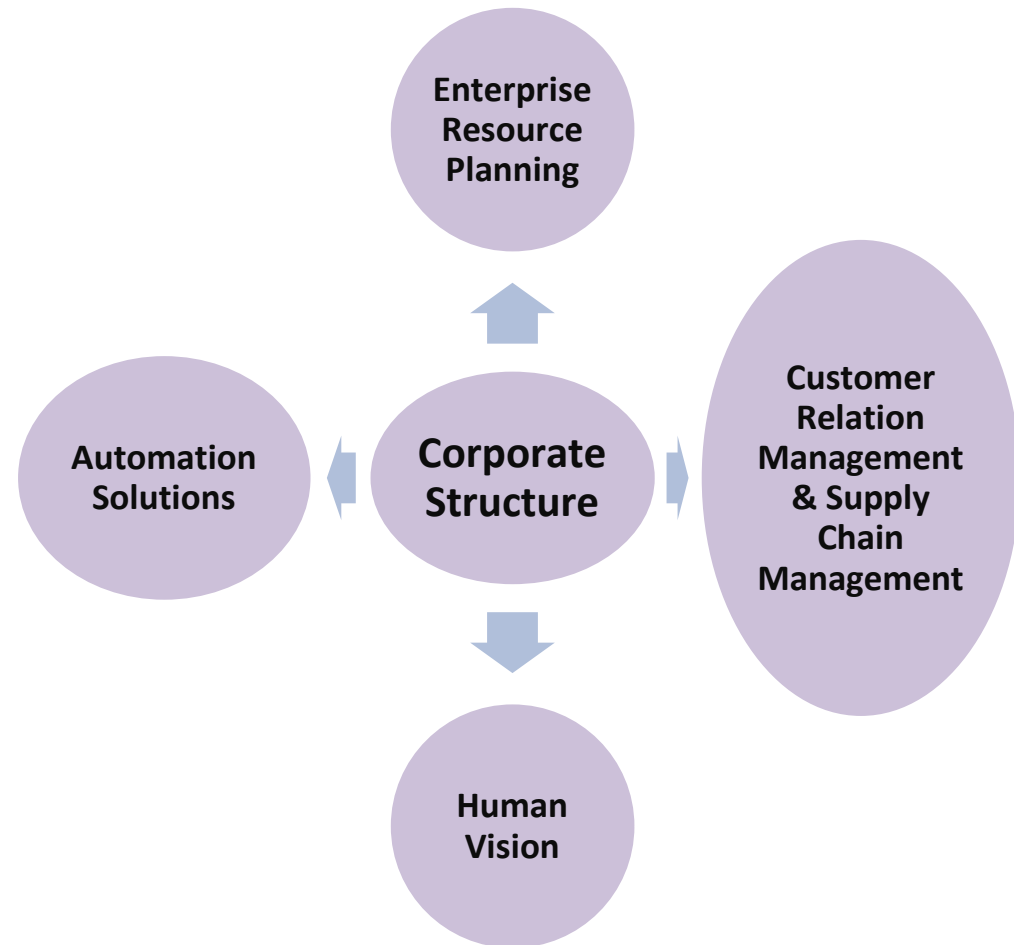
Our Capabilities

Process Re-engineering.

Organizational Productivity Enhancement

Product-centric and Service Oriented.

Our expertise



“We” are Synchronized

Your Requirements

Need of an Integrated end to end solution.

In-adequacy in Existing systems (if any)

Necessity of optimization and increase productivity

Our Contribution

We Study your practices

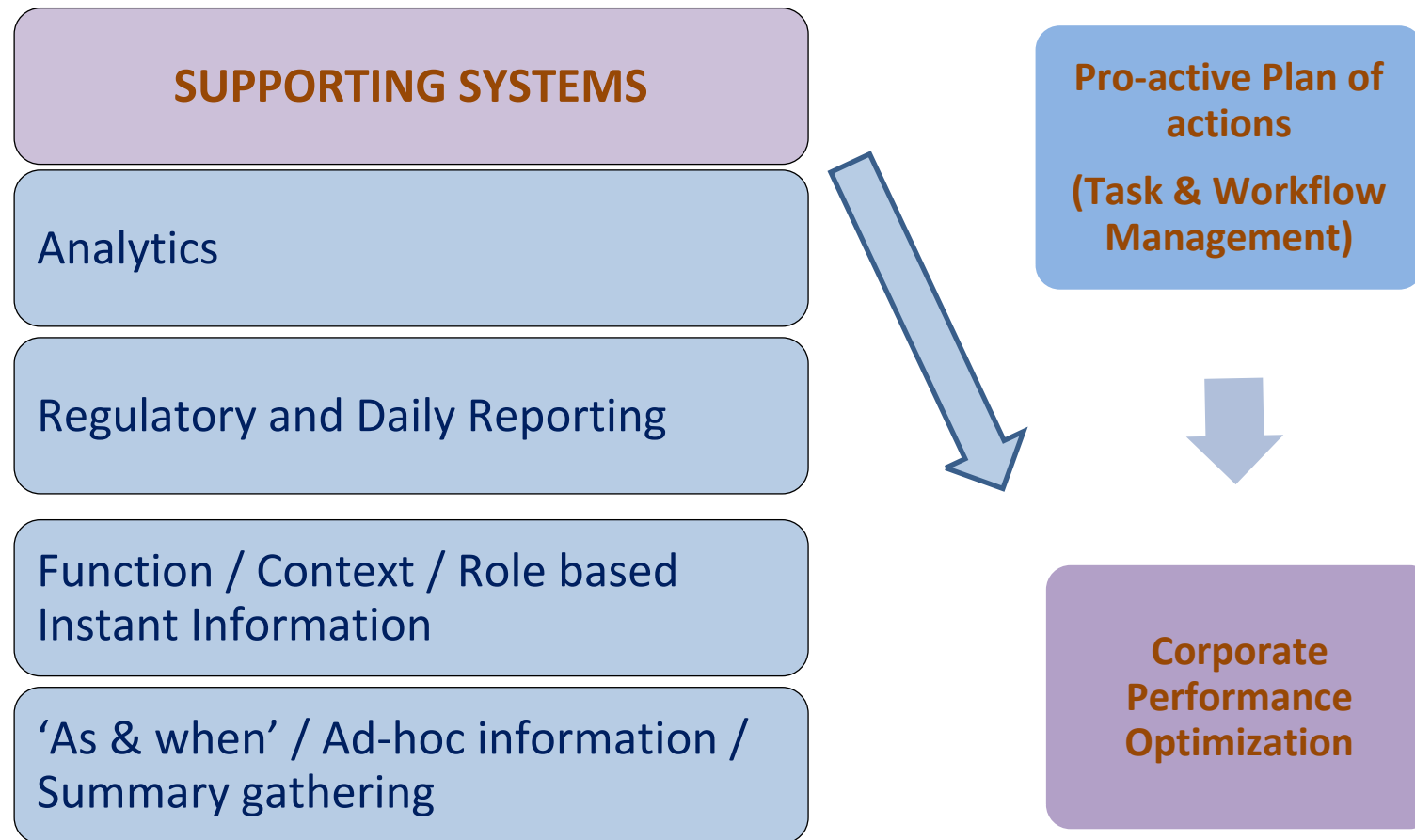
We help you to identify the best practices

We offer the best practices in Solution

Single platform Single view



Induce Intelligence to Business

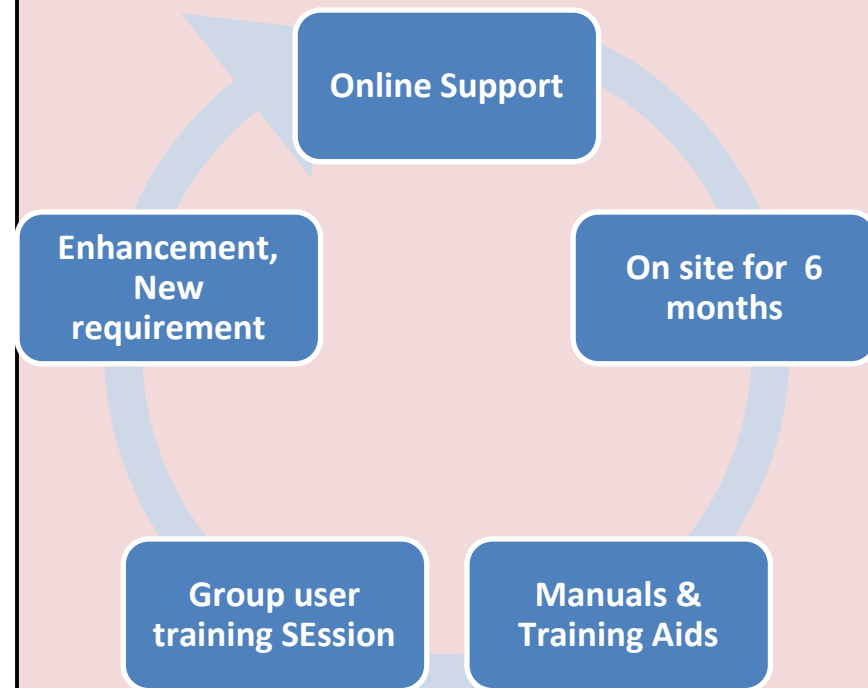


Development, Delivery and Support

- Implementation



- Support



Identify Demand, Arrange Material

- Create Indents
- Send Inquiries to Vendors
- Register Quotations
- Compare Quotations and Review system suggestions
- Create PO
- Follow up on Committed POs

Procurement
Planning &
Execution

- Receive Material
- Generate Labels for Quarantine
- Auto intimation to Q.C. for testing.
- Transfer required Material (As per Batch Size) to Production.
- Stock management through Barcode System

Inventory
Managemen
t &
Control

- Consolidate Orders
- Identify Stock & ROL
- Calculate Total requirement
- Match with quantity available
- Auto Create Indents for Procurement
- Identify the commitment dates of Order fulfillment
- Initiate Production planning

Production
Planning

Sales Order
Consolidation
/ Demand
forecasting

- Review of Client orders to be executed
- Plan Dispatch
- Complete Dispatch
- Compliance to Statutory norms
- Conformance to Client demands
- Manage Receivables

Manage Production & Supply Products

- Daily / Periodical Production planning
- Work Order Creation
- Job work Planning
- Job work Issue Out & Receipt
- Batch Start & Creation
- Daily production and process document entry
- Production Approval

Production Execution

Quality Control

- Sampling categorization
- Sample received : ork serial number wise tracking.
- Sample type wise test parameters.
- Instruction remarks for each sample.
- Sample status in Dash board for each user.

Production Costing

Order processing and Dispatch

- Production Cost calculation.
- Product – Finish Item Standard Cost from RM, Process, Resources cost as per BOM & Process Card
- Batch wise Actual Costing.

- Response to Inquiry
- Commit dispatch date
- Packing and dispatch instructions along with Order
- Review Commitment and schedule dispatch
- Arrange despatch
- Statutory and customer specific documentation

'Pharma Specific' requirements are taken Care

Material Level

- COMPONENT TYPE – ACTIVE / INACTIVE
- EXPIRY MONTH
- RETEST MONTH – USED FOR STABILITY
- SAMPLE QTY
- RETAIN QTY - USED FOR STABILITY

STORE INDENT :

Quantity will be (auto) calculated based on Component Type and Standard Overage %.

PROCESS GROUP MASTER :

Per Unit Required Quantity Auto calculation based on Overage % with Active / Inactive Component Type and Weight Compensation. This will be calculated based on Batch Quantity.

QC PARAMETER :

Potentiality % Parameter can be defined in Parameter Master.

QC DONE ENTRY :

Enter the Actual potentiality % at the time of QC Done for the specific Potentiality required Parameter.

STABILITY RETEST SCHEDULE :

Stability Re-test check Entry form for each batch of each Finished Product.

PENDING STABILITY :

Can Generate Sample for Stability Checking auto and through manual form as well.

'Pharma Specific' Compliance Requirements

- **System can be validated for Electronic Records and Documents.** (CFR 21 Part 11)
- Document Tractability
- Traceability matrix simplifies the process of proving if and where the requirements or specifications are tested.
- An aid to efficient test specification design.
- Any time record - what is done and when it is done.
- Gives complete **end to end view of a drug history** and root cause analysis. (CFR 21 Part 211)
- Strong presence of **documentation as a pre-requisite to achieve GxP.**
- Documentation for **achieving CAPA** (Corrective Action – Preventive Action) schedules.
- It acts a 'Ready Reckoner'
- Met key requirement for any compliance audits.

Application Scope I

Functions & Features

- Identify Market Demand / Process Customer Order
- Production and Procurement Planning
- Procurement Execution
- Receive Material from Suppliers / Vendors
- Ensure Quality of received Material
- Manage / Control Inventory of all Category Items
- Issue Material for Consumption / Production

Controls

- Demand forecasting aligned with Past performances

Application Scope II – Production / Manufacturing

Functions

- Daily / Periodical Production planning
- Work Order Creation
- Job work Planning
- Job work Issue Out & Receipt
- Batch Start/ Creation
- Daily production / process done entry
- Production Approval
- Transfer Finished Goods ready for Dispatch to
- FG Godown / Stores
- Excise Documentation and Reporting

Controls

- Material Issue as per BOM & Master Process Card
- Quality Check / assurance at various stages
- Adherence to Good manufacturing Practices
- Adherence to Good Material Handling Practices

Application Scope III- Product to Market

Functions

- Review of Client orders to be executed
- Plan Dispatch
- Complete Dispatch
- Compliance to Statutory norms
- Conformance to Client demands
- Manage Receivables

Controls

- Customer Credit Control
- Material dispatch based on parameters in Sales Order
- Configurable Levy parameters Customer wise / Customer group wise
- Multiple price list – customer category wise.

MACRO VISION

ERP For Process Industry Manufacturer

Purchase & Inventory Management

- Indent
- Inquiry
- Quotation
- Quotation Comparison
- Purchase Order
- GRN
- Purchase Invoice
- Purchase Return

Sales Management

- Sales Inquiry
- Sales Quotation
- Sales Order
- Packing Slip
- Sales Invoice
- Sales Return
- Export Management

Finance Management

- Budget
- Cash Payment & Cash Receipt
- Bank Payment & Bank Receipt
- TDS Entry & Report
- Excise Entry & Reports
- Service Tax & Vat Report
- Export Documentation
- Import Documentation

Production Management

- BOM/Formula Master
- Process Card Master
- Production & Procurement Planning
- Packing Planning
- Work order Planning
- Batch Costing
- Job Work Management (IN & OUT)

QC Management

- Sample Management (IN & OUT)
- Dashboard user wise
- SOP bind with Parameters
- COA Configuration & Printing
- QC Costing
- Stability Module

HRMS Solution

- Time Office Management
- Payroll Management
- Personnel Management
- ESS (Employee Self Service)
- MSS (Manager Self Service)

Workflow Management Document Management

Procurement

Functions

- Create Indents / Requisitions
- Send Inquiries to Vendors
- Register received Quotations
- Compare Quotations and Review system suggestions
- Create Purchase Orders
- Follow up on Committed Purchase Orders

Controls

- Purchase as per Indented and Approved Quantity
- With the help of information of Approved Vendors
- Multiple layers of Approval for purchases – Value based / Material / Location based
- Compare Quotations and Review system suggestions
- Create Purchase Orders
- Follow up on Committed Purchase Orders
- Supplier history (Occurrences & Adherence to Schedule)
- Performance reports (Quality and Volume)
- Item wise / service wise supplier
- Previous purchase history
- Minimum / maximum stock level
- Item wise consumption pattern
- Item wise, value wise different approval authority
- Purchase rate Contract for faster purchase cycle

Inventory Management & Controls

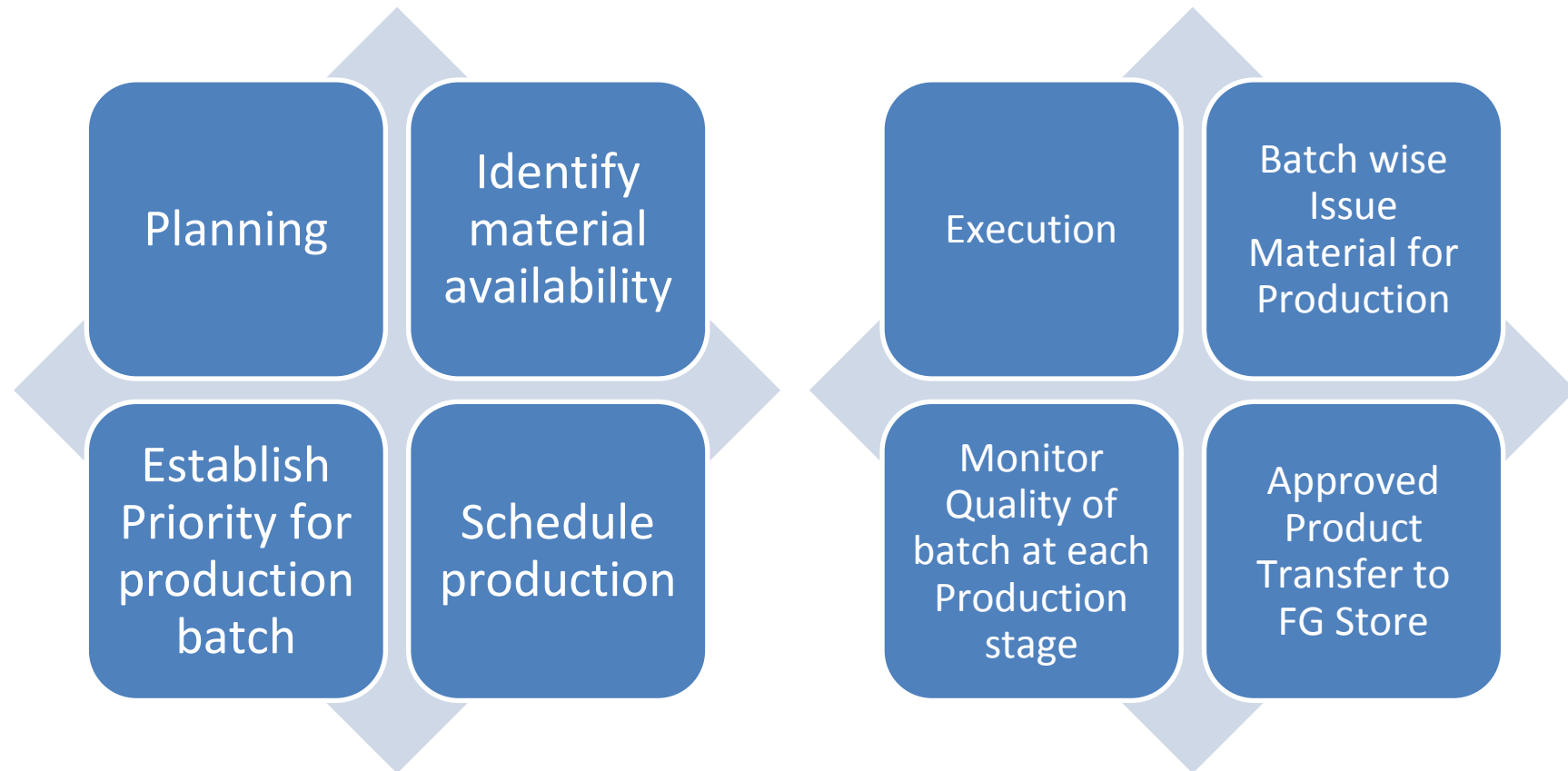
Functions & Features

- Receive Material (GRN)
- Generate Labels for Quarantine
- Auto intimation to Q.C. for testing.
- Documentation on stock receipts as per statutory formats / procedures.
- Monitor timely completion of material testing for early issue for Production.
- Transfer required Material (As per Batch Size) to Production.
- Stock manage through Barcode System
- A.R. No wise Material Selection with QC parameter visibility
- Product wise Batch wise Inventory Tracking
- Non Moving / Expire Materials – Product Inventory Control
- Product / Material Category wise Stock statements
- Product / Material Category wise online Stock Status
- Re-order for Product / material procurement based on Stock level
- Inventory valuation periodically and ratio analysis

Controls

- Issue of materials based on approved requisition which are compared with master for Materials
- Each item is configured with ROL / Minimum / Maximum stock quantities

Production Planning & Execution



Production Planning & Execution

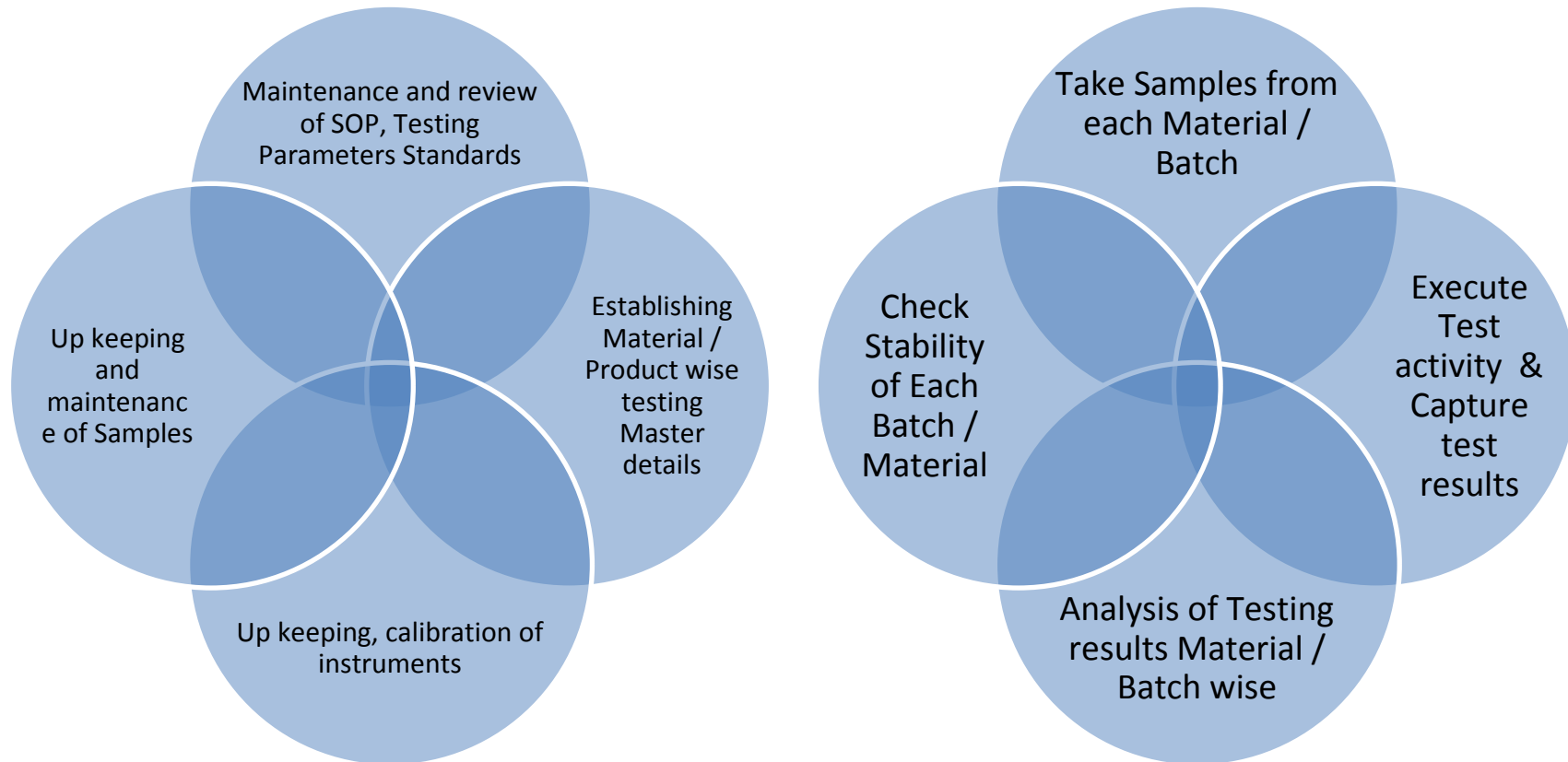
Functions & Features

- Planning
- Identify material availability
- Establish Priority for production batch
- Schedule production
- Execution
- Batch wise Issue Material for Production
- Monitor Quality of batch at each Production stage
- Approved Product Transfer to FG Store.

Controls

- Product wise Bill of Material; Multiple BOM for one Item & Configurable Packing BOM .
- Process Master linked with Machine and Manpower Usage.
- Process configured with activities and input Item
- Stage wise Resource Consumption for standard process cost calculation in Process Card.
- Default Process Card can be defined for Costing calculation.
- Finish product indent will be generated by sales department based on sales Order or Sales Forecasting.
- Store Department can generate Indent for Production based on Minimum level of Inventory.
- Production order can be generated final production planning with scheduling.

Quality Assurance & Control



Quality Assurance & Control

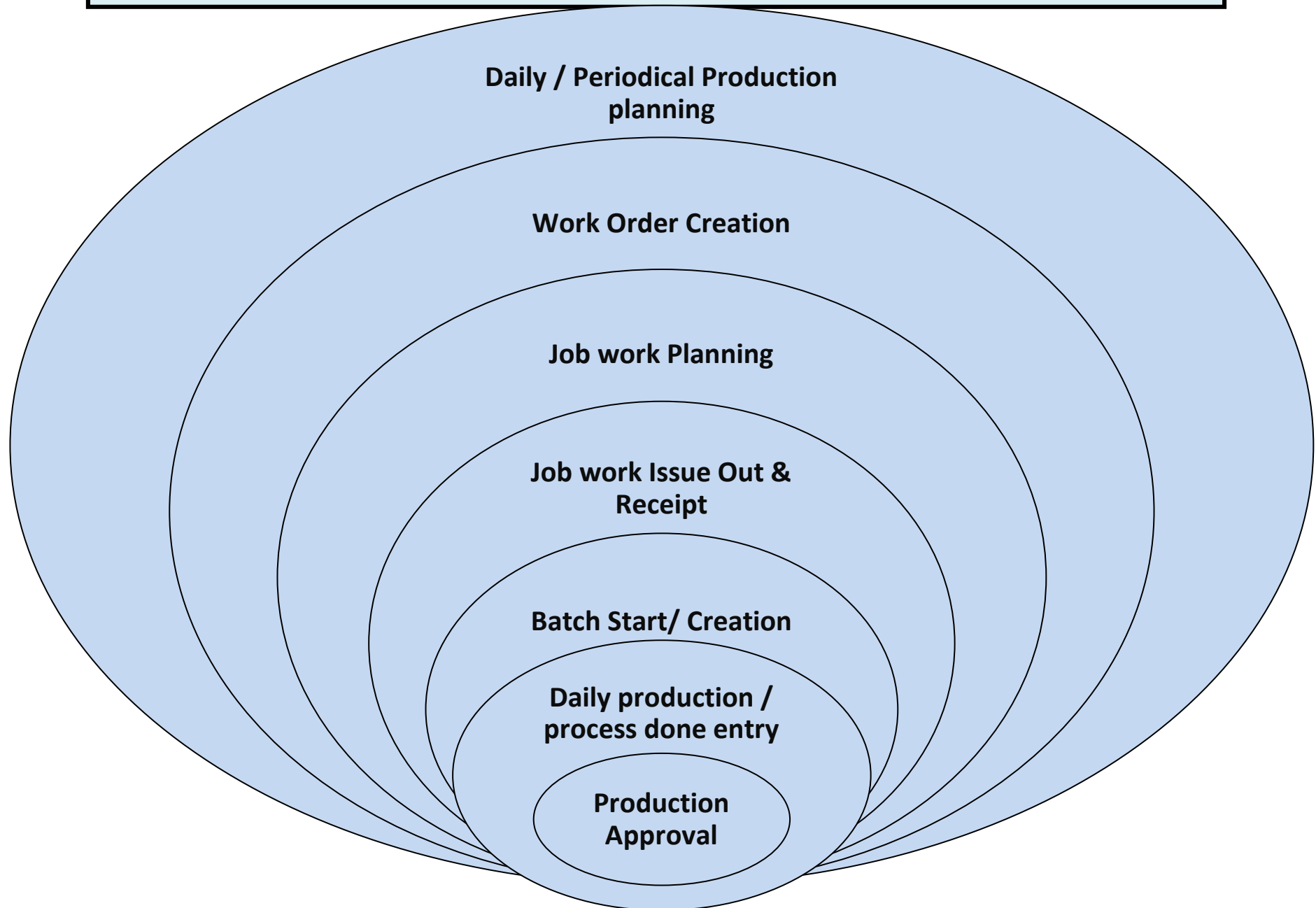
Functions

- Maintenance and review of SOP, Testing Parameters Standards
- Establishing Material / Product wise testing Master details
- Up keeping, calibration of instruments
- Up keeping and maintenance of Samples
- Sampling categorization
- Sample received – Sample number – Work serial number wise tracking.
- Sample type wise test parameters fixing. Lab selection for work allocation.
- Instruction remarks can be entered for the sample, which will be seen by each tester (Chemist).
- Sample status in Dash board for each user-Tester, lab in charge and QC Manager.
- User specific (Lab Chemist / Manager) Dash Board and Parameter wise work pending and work done entries.
- Sample wise - Test certificate generation

Control

- Material / Finished Product wise test specifications for various Standardads (like IP, BP, FDA etc)
- Standard Operating Procedures (SOP).
- Technical Documents, Product Specs as per Customer requirement, etc.. are integrated parts of System
- Test Parameter master : Standard value, Deviation, Range Min & Max value, Observations, etc., can be defined.
- Document can be attached for Parameter or for SOP linked with parameter.
- Cost of Parameter testing and time required for testing for each parameter.
- Item group wise specifications.
- Standard sample management with specifications and test values.
- Reading entries and pre-defined Calculations.
- Process linking for each parameter for work flow management.
- Item wise Specifications- with change management.
- Tester wise Test parameter linking for work distribution.
- Sample type – First test, Re-test for RM, Intermediate, FG.
- Test Certificates (TC) or Certificate of analysis (COA) Standard work sheets.
- Configuration for COA
- Test Instruments – Linked with testing. Calibration schedule management.
- Multiple Lab (Units) – test instruments, Testers (Chemist) & Test parameter linking.

Production execution



Production execution

Functions

- Work Order generation (based on sales order or Sales Forecasting)
- Daily Production allocation (Batch start)
- Production allocation stage wise – plant wise scheduling.
- Work order wise – product wise Batch wise Production entries.
- Process wise – input Item wise Comparison report with deviation.
- Multiple Output / bi- Product Production entry. Wastage/ scrap can be entered.
- Start time –end time entries, Machine number (Line number) & Operator name entry.
- Material produced can be rejected by production department or it can be taken out of work order to use in other work order.
- Sample out for quality check by production personals for the batch / stage.
- Packing of Loose Item to different packing size.
- Job work - Service work order (work on customer's Material).
- Job work Issue Out and Received back , Process done , cost of process – Batch wise vendor wise control.

Controls

- Testing done value of QC will be seen online to the concern person for that batch.
- Process wise standard Value and actual value entered at the time of production.
- Consumption of Consumable Items for each Machine. Inventory control for consumed Item
- Production approval after final QC report.
- Lot tracking from ingredients through intermediates to finish
- Pick list, Issue to production floor for work order wise, goods Batch wise and stage wise Raw material consumption & Costing.

Pricing and Costing

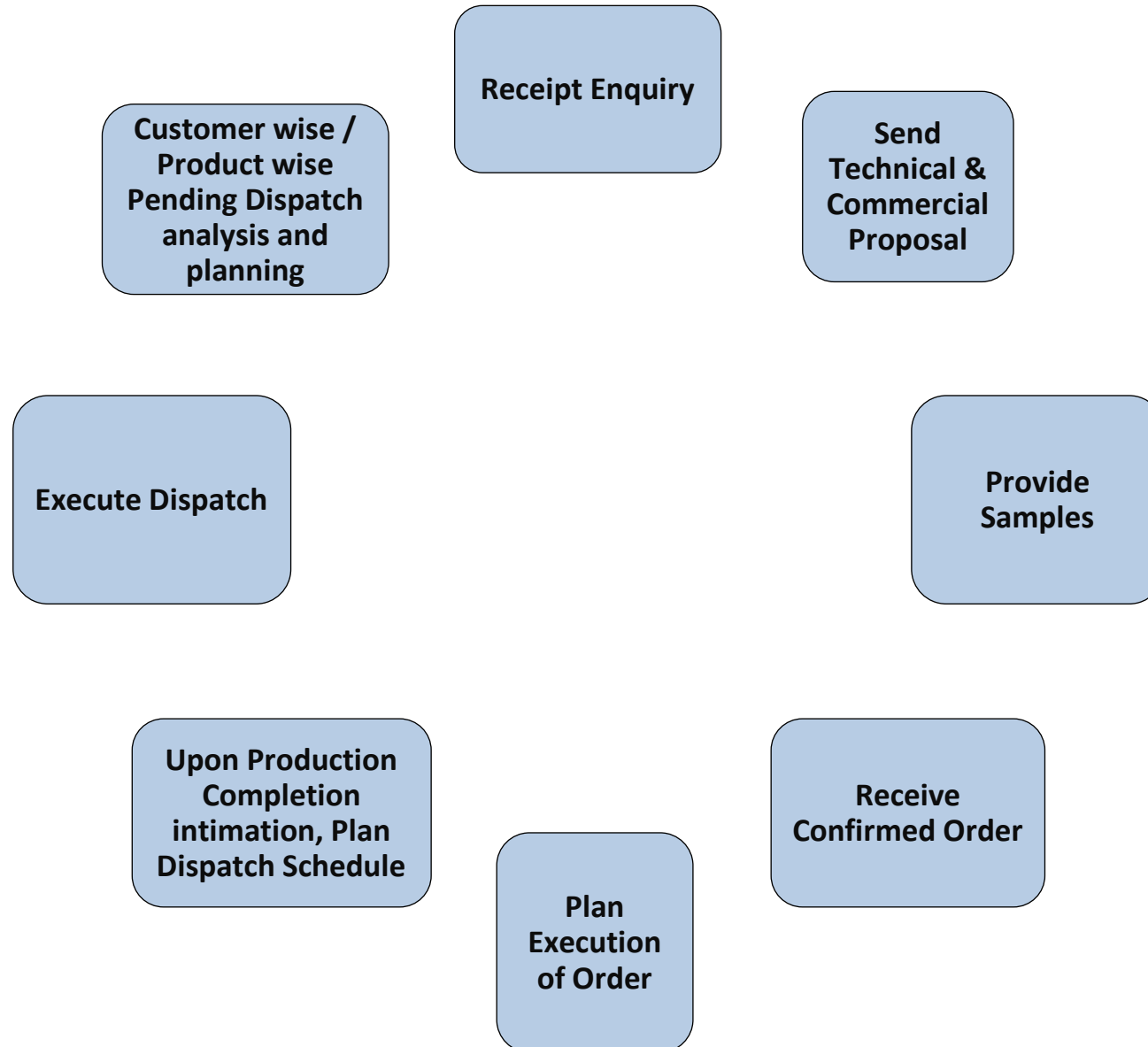
Product Costing

- Multiple sales types can be defined.
- Sales Type wise - Sr. number , prefix , common Serial number of multiple sales type, account code linking, Item Group, Location, Division and Printing format can be configured.
- Sales type wise Tax structure to have better control and reduce user's mistakes.
- Division wise, location wise – different user's rights.

Production Cost Calculation

- Product – Finish Item **Standard Cost** from Raw material purchase cost, Process cost, resources like Labor , Power, fuel, consumables etc. mentioned in Bill of material and Process Card and standard QC cost considered.
- Batch wise Costing , actual cost Calculation from Batch production actual Raw material used , Process cost and resource cost actual used and QC done cost incurred.

Sales Order Processing



Financial Controls & Accounting

Chart of accounts, N-Level Account grouping.

Grouping can be done for Revenue accounts, Direct and Indirect Expense accounts, Cash and Bank accounts, Supplier and Customer accounts and Control accounts.

Multiple division accounting – system will handle auto reverse entries for cross division entries.

Division wise users rights - to control entries by authorized users .Users Can have multiple division's entry rights.

Multiple levels of cost centers can be defined to have expense bifurcations. Only allowed cost Center will appear for selection, at the time of expense voucher entries.

Reference accounts can be defined for additional level of analysis. Reference accounts can be Common for group of accounts.

Multiple currencies for each transaction. Currency Gain & loss at the time of transactions.

Multiple Transaction Types for almost all Transactions. Different transaction serial number With different Prefix and transaction type wise different approval authorities can be defined.

Approvals for each transactions-

TAX / VAT / Levies & Statutory Reporting

- Tax structure - Type of Tax with calculation method and effective dates.
- Government Statutory Reports and Forms for Excise, VAT, Service tax, etc.,
- Configurable TDS deduction structure (Deduction while transaction, on specific account).
- TDS payment Challan and other reports will be generated.
- Form 16 and 16 A & TDS Statutory Reports- 26 Q & 27 Q, TDS deduction reports, Party TDS Report.
- Excise Charges in Sales. Excise Payment in Purchases.
- Statutory Excise, Service Tax, Sales Tax, Purchase Tax and Customs reports and Data migration for e-filing.
- Excise sett offs for input and output Tax – Reports.
- Excise calculation option on MRP, if applicable.
- Service tax Charges in Sales & Service tax Payment in Purchases.
- Service tax sett offs for input and output Tax – Reports.
- Service Bill Register, Service Tax Payment Register, Service Tax “Service tax Category Wise”, Service tax Credit - “Service tax Credit Wise”, Service Tax Pending - “Service tax Credit Wise”
- VAT Charges in Sales; VAT Payment in Purchases; VAT sett offs for input and output Tax – Reports.
- Form 201 A,B,C & Summary, VAT wise Sales Detail Report, VAT wise Purchase Detail Report, Local Purchase Report, Import, OGS, Tax Free Purchase report, Local Sales Report, Export Sales report, ODS Sales report

Implementation Plan

Existin
g
Proces
s
Study

- Get details from Team leaders
- Get details from Team members
- Study / Scanning Reports
- Study / Scanning Manual / XLS / Word documents
- Scanning Auditors' / CA's reports
- Walkthrough of existing Software and outputs

GAP analysis & Customization Plan

**GAP analysis
documentation
with Solution**

**Customization
plan**

- Solution

mappin
g

- Require

ment

- Customi
Finalizat

zation
ion
of

solution

- Customi

zation

- Review

with

Installation, User training and User Testing

**Checking Existing Hardware
setup, including testing
connectivity between locations**

Installation

User training

User Testing

Modification and Corrections

Retest by User

Data importing and Trial Run

- Master Data Import
- Open transactions Import
- Balances Import
- Test Data
- Identifying and finalizing Enhancements
- Incorporating Enhancement Requirements

Set up the Final and Tested system

Installation of Final system

Testing systems by engineer

Testing by User

Removing junk data from Live Database

Verification of Data

Test and verify reports

Compliance verification by users / auditors / external agencies

Go live and Support

Go live

Post 'Go live' support
requirements and Planning

Road ahead for your business growth



Chattary Ajwan InfoTech Pvt. Ltd.



(CAI India), Ahmedabad

About Us

Chattary Ajwan InfoTech Pvt. Ltd. is Ahmedabad-India based company working in software since 1989. Our domain expertise is in web based High End Software Solutions, Business Applications for Manufacturing Industries, Service Industries and Retail Automations. We also work for big customized solutions.

CAIPL has a dedicated team of qualified & expert professionals, with specialization in the different technologies. It operates in different areas onsite, offsite & on line services for offshore. CAIPL delivers impressive quality very economically and effectively. It ensures project deliveries on time through best-in-class technology and solutions to optimize result. We have highly experienced implementers having in-depth business process knowledge, expertise for requirement gathering and delivering software as a solution. We have presence in India, Middle East countries and African countries. We have Marketing and Service Support offices of our business associations in Kuwait and Nairobi.